

Christchurch - Mt Cook - Queenstown

Plains, Alps, Tussocks & Sheep
Short Hop Transfer –Full Day

Tour code: SH01b

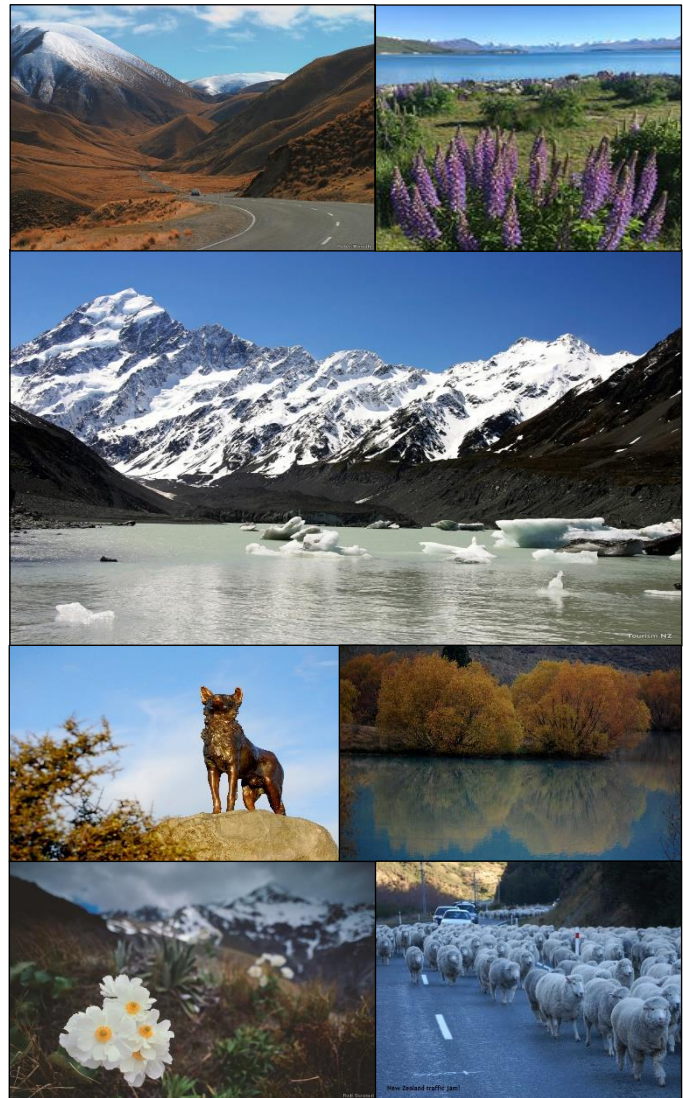
This tour is an alternative to the large coach transfers or flying, a chance to experience this part of South Island at leisure...

Journey across the Canterbury Plains to the foothills of the Southern Alps. Your journey will take you across the wide expanse of the plains and then across the Rakaia River and its gorge. Heading south, you will travel along the foothills and through small picturesque country towns before crossing Burke's Pass and entering the MacKenzie High Country, named after a sheep rustler. Pass the glacial formed high country Lakes - Tekapo and Pukaki before turning towards Mt Cook National Park.

If desired, time can be allowed for a short walk to experience the alpine vistas or perhaps a glacier flight with a landing on the Tasman Glacier (not included in tour cost). Depart Mt Cook and travel south through the MacKenzie Country and over the Lindis Pass into Otago Province, where a dramatic change in the landscape occurs as you head towards Queenstown. A stop can be made in the Kawarau Gorge to view the Bungy bridge (where it all started!).

Once you are in Queenstown, your guide will provide a brief familiarization of the town and its environs before dropping you at your accommodation and bidding you farewell.

Please note this tour can begin in Queenstown and finish in Christchurch.



Tour Inclusions:

- Travel by deluxe mini-van
- Picnic morning or afternoon tea
- Café lunch
- Fully escorted with local knowledgeable guide

Not included:

- Guest accommodations, breakfasts, evening meals or optional activities

Depart Christchurch at 7.30am & finish in Queenstown at approximately 6.00pm (or in reverse)